



# CWS | Priority Practice Areas

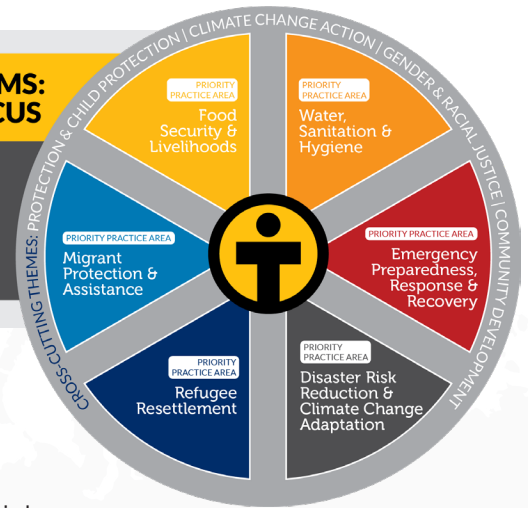
PHOTO: CATCHLIGHT PICTURES

## About CWS

Church World Service (CWS) is a faith-based organization transforming communities around the globe through just and sustainable responses to hunger, poverty, displacement, and disaster. Our vision is a world where everyone has food, voice, and a safe place to call home.

### CWS PROGRAMS: AREAS OF FOCUS

**CWS Mission:**  
TRANSFORM COMMUNITIES  
AROUND THE GLOBE  
THROUGH JUST &  
SUSTAINABLE RESPONSES  
TO HUNGER, POVERTY,  
DISPLACEMENT & DISASTER



## Our Approach

At its core is a deep commitment to the values of justice and sustainability, which leads us to value collaboration, respect, partnership, innovation, inclusion, and excellence in our work. These values also drive us to pay special attention within our programs to ensure that individuals and communities with urgent or overlooked needs are served with equity and dignity.

## Areas of Focus





It is increasingly clear that the causes and consequences of hunger, poverty, displacement, and disaster are interconnected. CWS responses reflect this complexity. Therefore, our work continues to be organized around six priority practice areas:

- 1 **Water, Sanitation & Hygiene (WASH)**
- 2 **Food Security & Livelihoods**
- 3 **Migrant Protection & Assistance**
- 4 **Refugee Resettlement**
- 5 **Disaster Risk Reduction & Climate Change Adaptation**
- 6 **Emergency Preparedness, Response & Recovery**

These practice areas are interconnected. For example, we may deliver WASH interventions within emergency response programming and serve migrants within food security and livelihoods programs. These are not mutually exclusive categories; they are designed to highlight our technical/sectoral focus areas.

The following four cross-cutting themes intersect with each practice area and are present across programs and geographies:

### Cross-Cutting Themes

-  **Protection & Child Protection**
-  **Climate Change Action**
-  **Gender and Racial Justice**
-  **Community Development**