



Who is CWS?

Church World Service (CWS) is a global humanitarian and development agency supported by 37 U.S. Protestant, Orthodox and Anglican churches who came together in partnership to do what none of us could do as well alone: deliver relief and empower communities. The mission: to transform communities around the globe through just and sustainable responses to hunger, poverty, displacement, and disaster. It is out of this mission that CWS works with local refugee resettlement offices and faith communities to engage them in welcoming newcomers to their neighborhoods and cities.

Transforming communities

For over 75 years, CWS has known that welcoming newcomers to our communities is an essential way to make sure all of us are more compassionate and civically engaged. We embrace our new neighbors, knowing that together we have a brighter future where all people will have the opportunity to grow and thrive.

Embracing new neighbors allows us to engage cross-culturally in our communities. It helps us build empathy, heal past prejudices, and create cultural understanding as we learn that refugees are more similar to us than they are different.

Through decades of experience, CWS knows the importance of ensuring communities receive the support they need to welcome new neighbors.

Why welcome refugees and immigrants?



Welcoming creates compassionate and civically engaged community members



Welcoming builds empathy, heals past prejudices/stereotypes and expands cultural understanding and knowledge



Refugees that are met with community welcome become more integrated, more quickly



Welcoming educates community volunteers about displacement and creates informed citizens



Welcoming enriches cross-cultural diversity and experiences



Welcoming is a catalyst for transformed communities

**CWS***Co-sponsorship*

What is co-sponsorship?

Sponsorship is when a group of 5 or more community members join to assist in welcoming a newly arrived refugee family or individual to the United States. Sponsors commit to signing a written, non-legally binding agreement to collaborate with a local resettlement agency to provide a minimum of 8 of the core services for each refugee individual/family.

Some examples of core services include:

- Arranging safe and sanitary housing
- Setting up households with essential furnishings and daily living items
- Providing a culturally appropriate ready-to-eat first meal
- Providing food supplies and seasonally appropriate clothing
- Meeting a family at the airport pickup
- Application for public benefits
- Enrollment in English language programs, employment services, and schools
- Transportation to job interviews and job training
- Orientation to US culture and their new community

And many more unique opportunities

Who can become a co-sponsor group?

Any group of 5 or more committed community members can become a co-sponsor group. To be eligible, all members of the co-sponsor group must complete a volunteer orientation, co-sponsorship training, and undergo a background check. Only after these requirements are fulfilled will they be matched with a family or individual in need. The co-sponsor group should appoint a team leader who will assume responsibility for the group and serve as the main point of contact with the resettlement agency. Co-sponsor groups can come from various backgrounds, including faith organizations, university groups, and social clubs. It is recommended that groups consider forming specialized committees to effectively address specific areas of need, such as housing setup, childhood education, employment, and more.

Interested in becoming a co-sponsor?

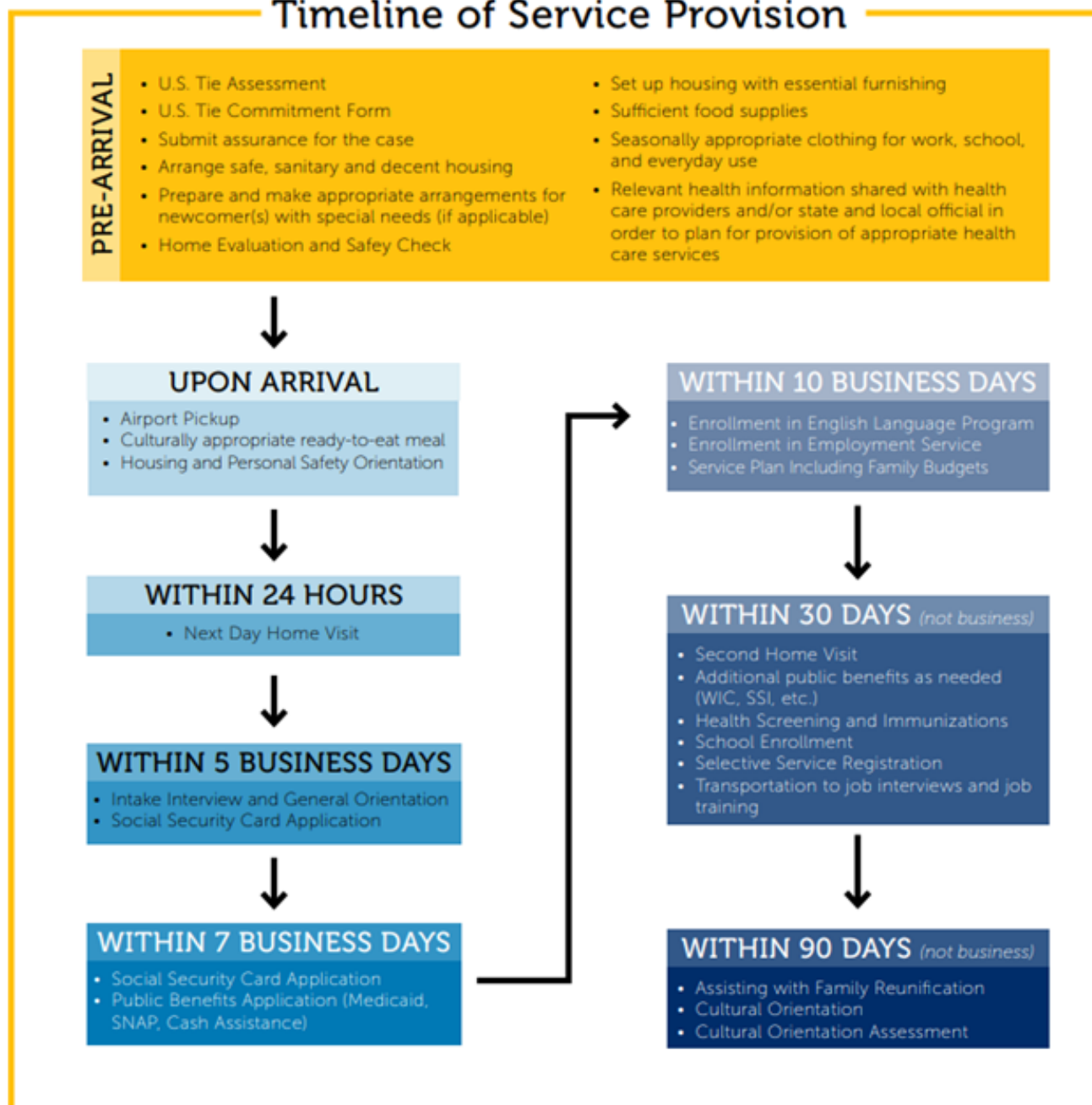
The first step to becoming a co-sponsor is to [complete our co-sponsor interest form](#). Within 3 days of being submitted, a CWS staff member will reach out to you to discuss the program and determine if it is a good fit.

Questions? Contact us at refugeewelcome@cwsglobal.org

How long is the time commitment?

Co-sponsorship can last between 3 to 6 months depending on the needs of the family and the capacity of the co-sponsor group. The amount of time co-sponsors will dedicate to a family will vary depending on the stage of welcome they are in. During the first month of arrival, there will be a higher number of hours committed to the family. They will have many program enrollments and appointments that may require co-sponsor support such as documentation completion, transportation, and childcare. The level of involvement with the individual/family will decrease as the family adjusts to their new life in the US and the co-sponsor relationship changes from mentorship to friendship.

Timeline of Service Provision



Where can I sponsor newcomers?

Co-sponsor groups can work with many of our local offices to welcome a newcomer. See the map below to see if there is an office near you. If there is not an office near you, you can still sponsor a newcomer through our [Remote Placement Community Partner Program \(RPCP\)](#). RPCPs work together with the CWS HQ remote placement team to resettle newcomers who are placed into remote areas--anywhere outside of a 100-mile radius from the nearest resettlement agency office.

